

Tile Hook Bracket, Railed

AXE_GS/SS_BR_TH_RD

Durable

Hot dipped galvanised to ensure lasting results. Also available in stainless steel for coastal and aggressive environments.

Innovative

Multiple hole positions for any purlin layout. Furthermore, the protruding arm can be horizontally moved for all tile types.

Versatile

Vertically adjustable under tile to accommodate a wide variety of tile types. Available in different protruding arm lengths.

Effortless

Rail is positioned above wood screws. In turn lower moment forces are applied to screws, leaving you with lasting connections.

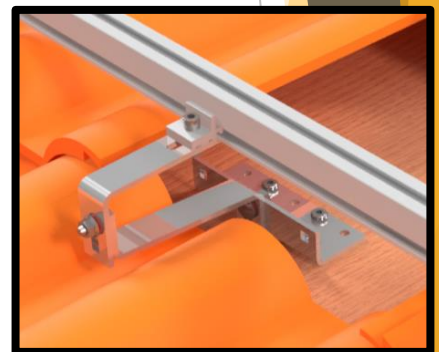
Dimensions



L 225mm * W 150mm *
H 150mm
951g

Application	Roof Top – Flush Railed
Roof types	Tile roofs
Adjustment	<p><u>Under Tile:</u> Vertical adjustment for a wide variety of tiles and purlin positioning. Horizontal hole positioning for various tile shapes.</p> <p><u>Above Tile:</u> Vertical adjustment for irregular roofs.</p> <p><u>Protrude:</u> Extend 140mm from the fixing point to match with various tiles.</p>
Materials	<p><u>Fasteners:</u> Stainless Steel 304</p> <p><u>Body:</u> Hot Dip Galvanised Steel Stainless Steel 304</p> <p><u>Protection washers:</u> Fibre (if bracket is of HDG)</p>
Certification	ISO 9001
Warranty	10 years ¹

Integration with Railed system connection



A: 42 - 52 mm, B: 140 mm
C: 52 - 74 mm

