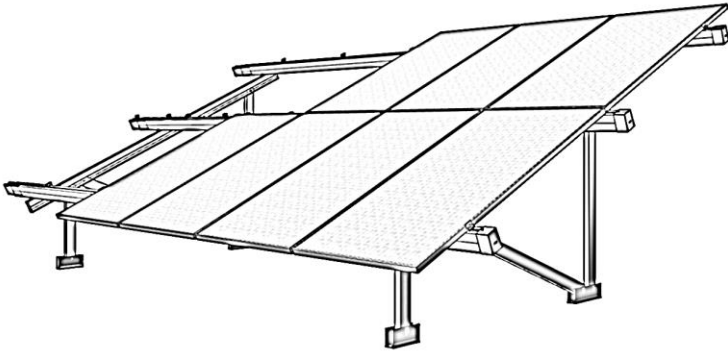


# AXE | STRUCT

DS\_AXE\_GM\_EL  
Product data sheet  
AXE<sup>GM</sup> EL – Ground Mount Elite  
V0.01



## AXE<sup>GM</sup>

Ground Mount - Elite

### Durable

All aluminium solution for the toughest environmental conditions.

### Innovation

All connection points are adjustable for uneven terrains. Light weight for ease of installation.

### Trust

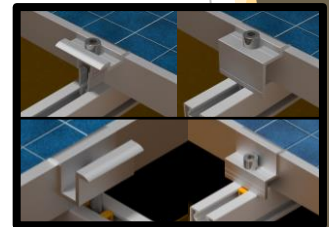
Conservative coefficient selections in structural design to assure resistance to failure.

### Effortless

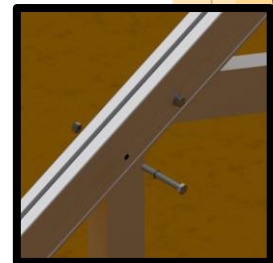
Innovative design for time saving installation methods with a modular and practical integrated solution.

<b>Additions</b>	Cable trays along rails and cable clips to panel frames End caps for rails and rafters	
<b>Orientation</b>	Mono-pitch or Duo-pitch	
<b>Sway prevention</b>	Cross brace in selected bays Available in either cables or angles	
<b>Module layout</b>	Landscape / Horizontal:	Up to 8 high
	Portrait / Vertical:	Up to 4 high
<b>Module inclination</b>	10° to 25° angle	
<b>Width and height</b>	Table length up to 35 meters, or adding of thermal gaps Lowest panel at maximum 1.5 meters, or consider Car Port structures	
<b>Support spacing</b>	In accordance with static calculations Up to 5.4 meters, depending on module inclination End overhang of up to 1.5 meter	
<b>Foundation</b>	Footplates connected to casted threaded rods Ground screws connected to footplates	
<b>Standards</b>	Eurocode 1 / SANS 10160	Structural design
	Eurocode 3 / SANS 10162	Structural use of steel
	Eurocode 9	Design of aluminium structure
	Eurocode 7 / SANS 10400	Foundation design
<b>Materials</b>	Support rails, Rafters, Upright posts and Bases	Extruded aluminium (6063 T6)
	Small parts	Stainless steel (A2) Extruded aluminium (6063 T6)
<b>Certification</b>	ISO 9001	
<b>Warranty</b>	10 years <sup>1</sup>	

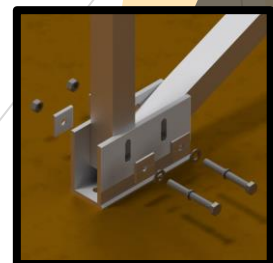
Clamp connection



Post connections to Rafter



Pile connections to Base



<sup>1</sup> For terms and conditions please refer to the Axe Struct Warranty Terms.