

AXE^{CP}

Car Port - Elite

Durable

Aluminium solution for the toughest environmental conditions.
Hot-dip galvanised steel columns.

Innovation

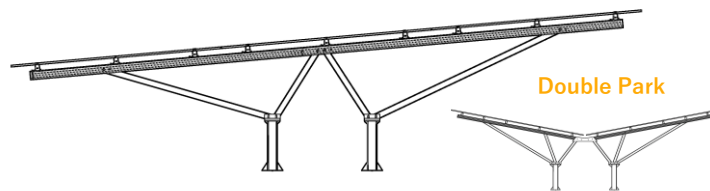
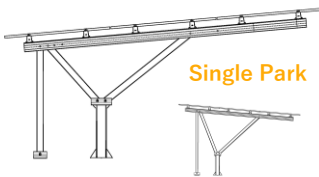
All connection points are adjustable for uneven terrains. Light weight for ease of installation.

Trust

Conservative coefficient selections in structural design to assure resistance to failure.

Effortless

Innovative design for time saving installation methods with a modular and practical integrated solution.

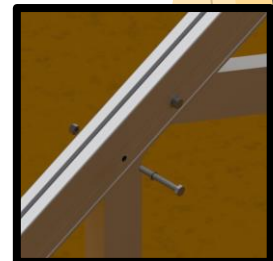


Additions	Cable trays along rails and cable clips to panel frames End caps for rails and rafters Horizontal support to column tops to reduce foundation moments		
Steep terrain	Cross brace in selected bays if row angle is more than 2%		
Module layout	Landscape / Horizontal: Portrait / Vertical:	Single: Up to 6 high Up to 3 high	Double: Up to 12 high Up to 6 high
Module inclination	5° to 10° angle		
Width and height	Thermal gap within 35 meters increments of table length Lowest panel at maximum 3.2 meters; For higher canopies standard sized posts will be scaled accordingly. Per post height customisable to accommodate terrain variations		
Support spacing	2 or 3 park bays (up to 5.4 or 7.8 meters) End overhang of up to 2.5 meters		
Foundation	Footplates and flanges connected to casted threaded rods		
Standards	Eurocode 1 / SANS 10160 Eurocode 3 / SANS 10162 ISO 1461 Eurocode 9 Eurocode 7 / SANS 10400	Structural design Structural use of steel Hot dip galvanized coatings Design of aluminium structure Foundation design	
Materials	Support rails Rafters, Upright posts and Bases	Extruded aluminium (6063 T6)	
	Raised bases	Hot-dip galvanised I-beams (S355)	
	Small parts	Hot-dip galvanised steel (8.8) Stainless steel (A2) Extruded aluminium (6063 T6)	
Certification	ISO 9001		
Warranty	10 years ¹		

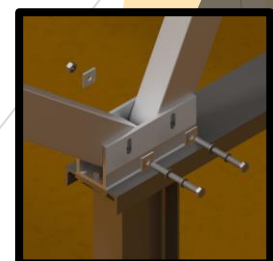
Clamp connection



Post connections to Rafter



Pile connections to Base



¹ For terms and conditions please refer to the Axe Struct Warranty Terms.